

Prague

Free map

Made by locals
for young travellers



This is *sitovka* — a reusable net-bag a Czech invention from the 1920s, now back on trend! Fun fact: actually, it can't tear.

Petr
mad box

Do you want to
act like a local?

YES!

Would you like to show some respect too?

YES

NO

NO?

Would you like to avoid crowds?

YES

NO

Would you like to skip scams?

YES

NO

Jáchym
weather expert

Martina
urban biker

5 minutes of history

1346 - 1378

MEDIEVAL CONSTRUCTION BOOM
King, later Emperor, Charles IV founded the university, the stone bridge, the New Town district, and other things named after him in Prague. Eventually he made our city the seat of the Holy Roman Empire. Germany, Austria, Switzerland, and Benelux were ruled from here.

1479 - 1618

WINDOW STORIES

We had a peculiar way of expressing disagreement with the authorities — we threw city councilors out of town hall windows. First in 1479 (after which the Hussite wars began), then in 1483, and finally in 1618 (which kicked off the Thirty Years War). Once it happened in the Old Town Hall, where our USE-IT team resides in 2022.

1918

BIRTH OF CZECHOSLOVAKIA

After World War I, we were fed up with being a part of the Austro-Hungarian Empire for 400 years. We weren't even mentioned in the name! So we declared ourselves the independent Czechoslovak Republic.

1942

OPERATION ANTHROPOID

Hitler assigned Reinhard Heydrich to end the Czech resistance in Prague. The exile Czechoslovak government in England sent 7 parachutists to assassinate him in May 1942. The operation was successful but yet, it started a new wave of terror.

1948

"VICTORIOUS FEBRUARY"

The communists gained full control over the government. Czechoslovakia became a single-party state for nearly 40 years. Human rights were restricted, people were imprisoned, some even sentenced to death. Many emigrated, others adapted. Empty shops and lines were a part of daily life.

1968

PRAGUE SPRING

For a few months our regime got the nickname socialism with a human face. We could even leave the country legally! Moscow didn't like it and deployed 200,000 soldiers and 2,000 tanks here, which stayed for the next 22 years.

1989

VELVET REVOLUTION

Thousands of people gathered at Wenceslas Square demanding democracy by jangling keys in their hands. Finally, the communists gave up. Barbed wire was removed from the borders and the now ex-president Václav Havel became president. A few years later, Czechoslovakia peacefully split into Czechia and Slovakia. But we're still close friends!

2020 - 2022

TROLLING THE RUSSIAN EMBASSY

To show our disrespect for Putin, we renamed the square with the Russian embassy after the Russian oppositionist Boris Nemsov. So the embassy used the entrance on the other street to change the address. But when Putin attacked Ukraine, that street was renamed to the street of Ukrainian Heroes. We wonder what the embassy will do next as they don't have more entrances to spare.

Czech menu

BREAKFAST

Don't spend much time on breakfast. Spread some butter on a **rohlík** (white bread roll) and put ham, cheese or jam on it. If you fancy something sweet, get a **koláč** or **buchta** (dough buns with various fillings), or a **babovka** (a cake in the shape of a volcano).



LUNCH

Start with a soup: **česnečka** (garlic soup), **bramboráčka** (potato soup), or **kulajda** (creamy fill soup). Then stuff yourself with our traditional meals: **svíčková** (tender beef with creamy sauce and dumplings) or **vepřo-knedlíčko-zelo** (pork meat, dumplings, and sauerkraut).



If you are a vegetarian, try our guilty pleasure, **smazžený sýr** (fried cheese). You might also find **smazžený květák** (fried cauliflower), **Bramborák** (potato pancake), isn't considered a main dish, but a few of them with sauerkraut will make you full. **Ovocné knedlíky** (fruit dumplings) are often served as main dish.



FAST SNACK

There is no bad time for **chlebíček**. Ham, potato salad, boiled egg, tomato, and pickles on a slim slice of white bread. Grab a few!



DESSERTS

Get a sugar rush in any **cajvárna** (café)! **Větrník** is a profiterole with cream filling and a sweet topping. **Rakovíčka** is a hard cookie (little coffee) and is usually served with whipped cream. **Puncový Féz** is a yellow-pink cake soaked in alcohol which proves that everything tastes better with alcohol.



BEER SNACKS

Hermelín (marinated Camembert), **útopence** (pickled sausage) or **tlačenka** (meat in jelly) go well with beer and are often served late into the night even after the chef has gone home.



DRINKS

Beer is the #1 choice and is often the option. See our Beer Tips for more!

If you are not into beer, we also do mostly from the Moravia region. Try **zelené** (white) or **Rulandské močidlo** is another option, some good ones are **Třívý sad** or **Frisco**.

As the night goes on, we might switch. Typical options are **silivovica** (plum **becherovka** (herbal biter). The one the most disgusting one is **zelená** a liqueur - tasting like toothpaste. You really drunk to be able to absorb it.

Not drinking alcohol? Some alternatives on tap are **mliniovka** (soda) or **Kofola** - an alternative to made from herbs and fruits. **Birell** non-alcoholic beer with a few flavo

Why are corner shops run by the Vietnamese? Each decade the community develops a new business area. They started with clothing and electronics, moved to nail salons and grocery stores, now they open bistros and restaurants. And we love them.

Vietnamese people came here during our socialist friendship with Vietnam and ended up staying. Now, they are a populous minority here. Older generation doesn't speak much Czech, yet the younger Vietnamese got a local education and integrated in the big city soup.

Tomáš
(ex) corporate slave

Do locals still live in the tourism city center? Yes we do! But sometimes it's tough. My neighborhood needs visitors to "feel" it, not just to take a selfie at the Charles Bridge and buy a crappy souvenir.

During Covid, our kids played freely outside our doors napped on the sidewalk, now that's no longer possible, but at least we've got local places opened where some tourist attractions used to





Cherish localhood

EAT LIKE A LOCAL
!O! We don't buy street food often. If you do want to, rather popular options are local fast food chains like *GoGo*, *Bageer's*, *Boulevard*, and *Burritia* *laca*.

DRINK WITH LOCALS
!O! Have a couple of drinks and get home before midnight — many of us get up early. Drinking in public might get you into trouble. Silent hours start at 10pm.

WALK LIKE A LOCAL
!O! During the day, avoid the crowded city center and explore other parts of Prague. The best time to cross the Charles Bridge is dawn — it's quiet and romantic.

RIDE LIKE A LOCAL
!O! Buy public transport tickets using the yellow machines or the app (see [link](#)). They are valid for buses, trams, metro, cable cars, and river ferries.

INTERACT WITH LOCALS
!O! Not sure whether to kiss, hug, or shake hands? Just wait to see what the other person does and copy.

SPEND ON LOCAL STUFF
!O! We use the Czech crown (Kč, CZK). €1, \$1 = 25Kč. Most places accept cards, but carry some change with you for the few places that don't (e.g., 1000Kč).

RECYCLE LIKE A LOCAL
!O! Buy things in secondhand shops (see our Secondhand Tips). Or get your own sifowal!

Would you like to skip scams?
 YES
 NO

UI DDI! DIKE!

use the entrance on the outer street to change the address. But when Putin attacked Ukraine, that street was renamed to the street of Ukrainian Heroes. We wonder what the embassy will do next as they don't have more entrances to spare.

"Feel" it, not just to take a selfie at the Charles Bridge and buy a crappy souvenir.

During Covid, the place was ours. Our kids played freely outside, our dogs napped on the sidewalk. Now that's no longer possible, but at least we've got local places opened where some tourist attractions used to be. Please support this real neighborhood culture!

Get consciously

!O! Dine in to avoid all the packaging that goes hand in hand with take-away food. And enjoy your meal!

!O! We drink tap water! It's as good as bottled water. If you have a refill bottle, you can also use drinking stations (see [link](#)).

!O! Set yourself a challenge: 15,000 steps per day is a reasonable target for Prague.

!O! Use public transport! It's cheap, runs at night, and goes everywhere (including the airport). Cycling is a bit tricky as Prague is hilly, yet bike rental is popular (see [link](#)).

!O! Be nice to us and we'll be nice to you. Ask local guides (see [link](#)) to tell you local stories!

!O! Shop locally! Don't support tourist shops full of unauthentic crap. Get original souvenirs at *Bohemia 28* or *Koh-i-noor 27*.

!O! To separate trash for recycling in the center of Prague is challenging. Just carry it for a bit until you find the right bin.

Give you crazy?!

!O! The chimney cake (*trdelník*) is not Czech, not traditional, and not so good, which is why you'll see it in trash bins.

!O! Pub crawls are for losers. Absinthe wasn't created here and isn't popular among locals.

!O! Skip the crowded "Royal route" via the Charles Bridge to the Prague Castle.

!O! Scooters are noisy, useless on cobblestones, and expensive. Fake historical vehicles and hop-on-hop-off buses are silly.

!O! Save your dignity: ignore Thai massages, Irish pubs, and Russian matryoshkas.

!O! Use ATMs (except Euronet) rather than money exchanges, and withdraw cash without conversion. Don't buy "weed" — it's illegal — the tourist crap has OTHC.

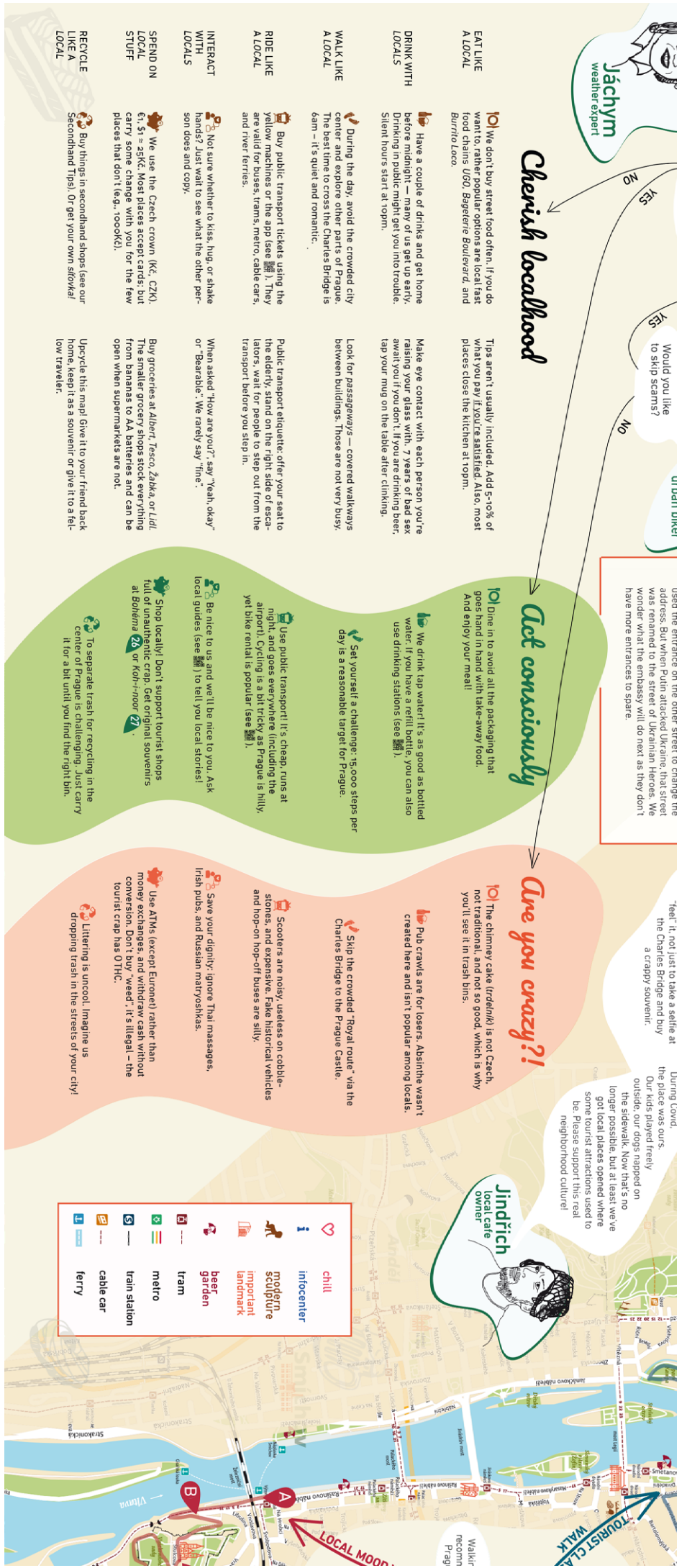
!O! Littering is uncool. Imagine us dropping trash in the streets of your city!

Jindřich local cafe owner



During Covid, the place was ours. Our kids played freely outside, our dogs napped on the sidewalk. Now that's no longer possible, but at least we've got local places opened where some tourist attractions used to be. Please support this real neighborhood culture!

	chill
	infocenter
	modern sculpture
	important landmark
	beer garden
	tram
	metro
	train station
	cable car
	ferry



Local mood walks

We rarely hang out in the center – noise and crowds kill our vibe. Prague is so much more than the Old Town – let us prove it to you!



Local mood walks

CZECH-ONLY ARCHITECTURE

Start at the **Vltava** tram stop and walk along the Vltava river. Look at the **three cubist houses** – they are examples of cubism in architecture, a unique sight around the world.

THE OTHER CASTLE

The mythical princess Libuše predicted the glory of Prague from the **Vyšehrad** rock. Admire the **Sts. Peter and Paul Basilica** and visit the atmospheric cemetery nearby, where noble Czechs rest. We come to Vyšehrad for a romantic walk on the fortification walls, a picnic in the grass, and drinks at the beer garden **Na Hradčích**.

POSTMODERN ADVENTURE

The massive **Muscle bridge** built in 1973 over the valley, was the pride of traffic engineers at that time. Note that the metro goes inside! But with its 42m height and only 1m high fence, the bridge became an infamous suicide spot. Now the fence is unclimbable. A great quiet kissing spot is the hidden park **Ztracenka** meaning 'the lost garden'. Star Wars fans get a chance to have a word with **R2D2**.

DOWN THE STAIRS

While descending the **Musle steps** imagine a couple cars rolling off the road and going down the stairs, due to drunk driving or faulty navigation systems. Yes, that happened. Also, look for the original **wooden house** which has been standing here for a century.

MUSLE STYLE

You end up at **Bratři Špinků Square** the heart of the Musle district, which was a separate city just 100 years ago and was known for the crude manners of its people. These days it's safe, but still don't expect to see many people smiling. Nonetheless, there's a lot to do here! Depending on your mood, have a coffee in the backyard of the **Cafe v Zahrádě**, a wine at **Vinný šenk** or a craft beer at the bar **Nostalgia**.

Get more info here!



juzit.cz/more-info

- Support us!
- Listen to our music
- Discover events
- See the map of public WCs
- Scan the QR to:
- Get useful traveler apps
- Download this map
- Share your feedback
- Find us on social media



Terka
element of surprise

DRINKS

Beer is the #1 choice and is often the cheapest option. See our Beer Tips for more info.

If you are not into beer, we also drink **wine**, mostly from the Moravia region. Try **Velfriřské zelené** (white) or **Rulandské modré** (red).

Cider ones are **Třdý sad** or **Frisko**.

As the night goes on, we might switch to shots. Typical options are **silivovice** (plum brandy) or **becherovka** (herbal bitter). The cheapest and the most disgusting one is **zelená**, a green mint liqueur tasting like toothpaste. You must be really drunk to be able to absorb it.

Not drinking alcohol? Some alcohol-free alternatives on tap are **malinováka** (raspberry soda) or **kolofa** – an alternative to Coca-Cola made from herbs and fruits. **Birell** is a good non-alcoholic beer with a few flavors.

people came here to stay. Now, they are a here. Older generation doesn't, yet the younger Vietnamese and integrated in the big city soup.

Be a traveler, not a tourist. And come back again! There's no off-season in Prague, yet we recommend October to avoid the worst crowds.

From here you can get to any of these USE-IT cities



Bohemian walk



Did you know that Bohemia is the name of a region in Czechia? This is where the term comes from. Even though the authors of the word (French) referred to Roma people, who they believed were coming from Bohemia. Despite the word's origins, we still like to relate to it, to think of ourselves as artistic, romantic and a bit wild. That's what this walk is like!

EAT & PRAY

This **farmers' market** started the open market trend in Prague. Enjoy the food and view of the Church of the Most Sacred Heart of Our Lord built in 1928-1932 by the Slovenian architect Jože Plečnik. He said the building was inspired by Noah's Ark.

LOVE IT OR HATE IT

The **Žitkov TV Tower** was built in 1985-1992 on the grounds of a former Jewish cemetery. The giant babies crawling the tower are an addition by the controversial artist David Černý. Opinions on the tower's appearance heavily differ. The tower has an observation point, a restaurant, and even a 1-1-room hotel with a city view from the bath.

Tourist classic walk



Being in Prague and not seeing THE Bridge, THE Clock, and THE Castle seems ridiculous, right? So let us show you an alternative path through (much) choking in the crowds. Take a deep breath while looking at the **panorama** our starting point, and let the discovery begin!

CHAPEL OF A BURNED PRIEST

Creed around the alleyways to appear in front of the **Bethlehem Chapel**. Here, in the 15th century (before Martin Luther!), the priest Jan Hus preached against the greedy Church. He did so in Czech instead of Latin, which was revolutionary, so he was burned at the stake for heresy in 1415. The sanctuary where he preached is now a memorial and a graduation hall.

OLD TOURIST SQUARE

Our medieval Astronomical clock is on the wall of the **Old Town Hall**. Tourists adore it and take photos of the moving figures as if they were rock stars. And we love its folklite: the mythical clockmaker Hanuš was blinded by authorities so that he couldn't build a crowd-pleaser for another year. A procession has disrupted



LOVE IT OR HATE IT! The Zizkov TV Tower **B** was built in 1985-1992 on the grounds of a former Jewish cemetery. The giant babies crawling the tower are an addition by the controversial artist David Cerny. Opinions on the tower's appearance heavily differ. The tower has an observation point, a restaurant, and even a 1-room hotel with a city view from the bath.

THE DEMONSTRATION SQUARE Can you imagine 3,000 people at Skoupovo square **C**? In 1988, it hosted the first legal demonstration against socialism. All those people were listening to the oppressed dissident and future president Vaclav Havel.

CHILL GARDENS At Pletrový gardens **D** people spend time sunbathing, sunbathing, or just trying to decide if they want another beer at Milářina **E**. You can also enjoy the view of the Prague Castle.

TREE ARCHES Lúdzká street **F** is full of 19th century architecture and in the summer has extra charm thanks to the hackberry trees growing on both sides. For this, it was even nominated for the Czech Avenue of the Year!

MYSTERIOUS VILLA Satoun villa **G** is a gem of Art Nouveau style. This was a meeting point of the Prague art scene in the 1920s. The Greek sign at the entrance says 'The seal of the seal referring to greek history. There are other inscriptions and signs on the walls - the folks gathering in the villa held occult practices in the cellar.

HIPSTER STREET Krámská street **H** is the heart of alternative culture in Prague, hipsterizing the city since 2005. It just keeps producing new bars, pubs and cafes. The beard parade takes place every day. Great place for hanging out.

ROMANTIC CAVE At Havlíčkovy gardens **I** you can drink wine on the terrace of the pavilion above the vineyards while overlooking the city. Take a walk in the park and end the evening in a hidden antique-style artificial cave **J**. Feeling in-love? This is the perfect spot for a kiss.

OLD TOURIST SQUARE Our medieval Astronomical clock is on the wall of the Old Town Hall **C**. Tourists adore it and take photos of the moving figures as if they were rock stars. And we love its folklore: the mythical clockmaker Hanuš was blinded by authorities so that he couldn't build a similar clock for another city. As revenge, he disabled the machine for 100 years.

JEWISH TOWN Most of Prague's former Jewish ghetto was demolished during the urban renewal in the 1950s. But you can still see the town hall **D**, and you can buy a ticket to visit the Old New Synagogue **E** - it was new one day, but became old after newer ones were built.

OBSERVING THE CROWDED BRIDGE During the day, looking at the Charles Bridge **F** is a better idea than crossing it. We stay away. It is beautiful and historic, but you won't appreciate it due to the crowds. The only time to visit it and feel the magical atmosphere of the past is at night or early in the morning.

PICTURESQUE ISLAND The island Kampeň **G** is an artificial one - it's cut from the mainland by the Cernovka canal. Hence the nickname 'Prague Venice', and it's indeed a romantic place. Enjoy the waterfalls in operation and then head uphill for a wonderful view.

OLD NEW WORLD Once you pass the Loreta **H** complex with bells (chiming every hour), you'll enter the neighborhood of Nový Svět ('New World'). It's another example of an old place which happens to have the prefix new. The district is full of narrow crooked streets with small houses from the 14th century.

PRAGUE CASTLE This castle is an icon of the Czech lands, and the seat of the president **I**. Also better to visit in the evening. Walking through the Castle complex is free, but you'll need to pay to see certain parts. The front of part of the St. Vitus Cathedral is free.

Cunch tips

We usually have lunch at 11:00–14:00 when many restaurants offer cheaper daily menus (on weekdays). See the Czech Menu section for advice. If you're vegetarian, then apart from the places below we also recommend *Diába Beas* and *Loving Hut*, the ubiquitous and cheap self-service bistros.



Hanka
local plant
mama

- 1 Na Urále Uralská 9
- 2 U Houbaře Dukelských hrdinů 30
- 3 Planeta Žižkov Tržovská náměstí 1
- 4 U Parlamentu Valentinůvská 8
- 5 Natureza Heřichova 14
- 6 U Matějky Korby Křemencova 17
- 7 Pasaža Nadrážní 102
- 8 Herbivore Rašínova nábrží 34
- 9 U Parlamentu Valentinůvská 8
- 10 Moment Slezská 62

1 LEGENDS OF TRANSPORT

We have the **Museum of Public Transport** because we're so proud of it. Can you imagine a tram run by horses? Curious how ads on buses looked 70 years ago? Located in the old depot, the museum shows around 50 vehicles as well as related inventions of František Králik, our Thomas Edison. *Pačtůvka 2*

2 COUNTRYSIDE IN THE CITY

Want to hike without traveling far? Go to **Dvůrkův Sádky**, a nature reserve with a stream, a forest, and rocks. Take the tram 20 or 26 to the terminal station and step into the Czech nature. In summer, you can swim in the Džbán lake near the park entrance, or in the outdoor pool in the middle of the reserve. *Dvůrkův Sádky*

3 FIREPLACE CLUB

A spacious garden in the summer and always a burning fireplace – in the winter – that's the spirit of **Klubovna**. The evening program (free or under 200Kč) could be live music, a theater performance or a film projection. *Geneřická Pily 26*

4 NEED TO BE PRODUCTIVE?

Sit with engineering (and other) students in the **National Library of Technology**. For that, print a free day-pass using a ticket machine. Once you're done, notice "temporary" (there for many years) barriers outside, protecting you from falling panels – we like to grumble about them. *Technická 6*

5 ENTER VARNIA

A **Maze in Tehlovna** looks like a regular farmhouse. But watch the situation a bit and you'll see warlords open and lead to other rooms where much is happening: concerts, pub quizzes, slam poetry. Besides tea, they have craft beers, veggie snacks and hookah. *Kafkova 18*

6 AUTHENTIC WORKING CLASS BAR

Dvořákův nádraží presents an example of the slowly disappearing Czech phenomenon of cheap train station pubs. You will probably have a hard time speaking English here, so prepare the phrase, *Yoda no pee-vo-pro-seem?* (to order one beer). *Václavská 1*

7 HISTORY OF CZECH COFFEE

The **Coffee Museum** gives the story of the drink a national twist. Samples of original coffee sets and grainers locals brought here and discover all sorts of coffee substitutes they made in our lands during times of misery, e.g., from figs or *rybí žemě*. *Želivského 7*

8 TAKE LESS SPACE

Pod 7 kilo (←7kg) is a must-see spot for every backpacker. Can you imagine a 53g towel? This shop offers light and compact equipment for comfortable travels with your carry-on luggage. *Kř. Horákové 50*

9 PARTY ALL NIGHT LONG

While tourists go to the dull and overpriced **Karlovy Lázně** club, locals go to **Cross club**. It's underground, industrial, weird. Enter the metal maze with many stages and bars and see what's going on. The place hosts concerts, parties, as well as alternative theater. *Pavlůvka 23*

10 CONTEMPORARY ART GALLERY

A survivor of industrial architecture, **DOX** is the independent center of contemporary art, always hosting at least 3 exhibitions. A wooden airship *Guliver* on the roof is dedicated to literature and is a great viewpoint. *Poupětova 1*

11 GET HIP

A recipe for a successful hipster place? Take an abandoned factory building, a few old-school tables, and a delicious coffee, add an original design store and a strange exhibition. Mix it all together behind the unremarkable entrance. This is how you get **Vnitrobloc**. *Tasavova 37*

12 HUMANIZED SLAUGHTERHOUSE

What used to be a slaughterhouse and then a labyrinth of cheap goods stands run by the Vietnamese community, turned into a gastro-cultural hub, the **Prague Market**. Here you'll also find a contemporary circus in *Jakobův* and street art in *Truffo Gallery*. *Bulenská nábrží 13*

13 CAFE WITH A SOCIAL THEATER

Step from the noisy *Dlouhá* avenue to the quiet *Klimentská* street where the **Stúdio Cítadla** hides. It has a tiny theater where people from one of the psychiatric hospitals perform. Take a seat in the studio's cafe, maybe you'll see the owner, who'll tell you the 25-year story of this place. *Klimentská 16*

14 ANTIQUE CUTENESS

The gardens of the Convent of St. Agnes are invisible even to locals. As a part of the National Gallery, they display modern statues in the middle of a lawn. Nearby, find a tiny cheap family winery **U sv. Aněšky**. Service is by a sweet old couple, you probably want to look like this in your 70s. *Aněšská 3*

15 DANGEROUS ELEVATOR

How about a free shot of adrenaline? Enter the building of the Law Faculty of the Charles University, go straight, climb 4 stairs, and see the **patemoner elevator** on the left, looping without stopping. It's banned in many countries. So do a few loops! Weekdays only. *Májm. Curychova 7*

16 FEELING FANCY?

The Neo-Renaissance **Rudolfinum** offers classical music and visual arts. Dress up and get a ticket to the Czech Philharmonic (*Judolfinum.cz/en*, closed in summer). As for the gallery, let the posh exterior fool you – the exhibitions there can be wild. **Namastí! Republic 5**

17 MUSICIAN'S BLISS

The **Museum of Music** is a must-go for those interested in this most abstract of arts. Learn about Prague music history, see and listen to the hundreds of instruments. And take the unique chance to play some of them, including harp, organ, and theremin. *Karmelitská 2/4*

18 SLEEPY SALON

The cafe **Dobrá trafika** is hidden behind a seemingly ordinary newspaper/tobacco shop. Enter a retro room where you can listen to jazz tunes and enjoy the calm atmosphere. When leaving, pay at the tobaccoist counter. But before that, think twice, don't you want original posters? *Dvůrkův 37*

19 MODERN ART MUSEUM

The oldest mall in Prague has been turned into a modern art gallery. **Museum Kampa**. Here, you can see the works of František Kupka, a pioneer of abstract painting and the best-selling Czech artist. Another part of the permanent exhibition are cubist sculptures by Otto Štrougal. *U Sovových mlýnů 2*

20 HIDE FROM TOURISTS IN THE CENTER

The smart way to escape the Old Town Square madness is the **Scout Institute**. Find events and exhibitions here, feel the creative vibe at the cafe, the courtyard, and the balcony. Many nonprofits have offices in the Prague Creative Center located in the same building. And on that note... Visit us in room 215. *Saromátská nám. 1/4*

21 COFFEE WITH FUTURE ACTORS

The last chance to escape the touristy Royal Way (from the Powder Tower to the Charles Bridge) is **Kate Danu**. This place belongs to the Theater Faculty of the local Academy of Performing Arts, so expect creative spirit, good coffee, and cheap food. *Karlova 26*

22 FOR ARCHITECTURE FANS

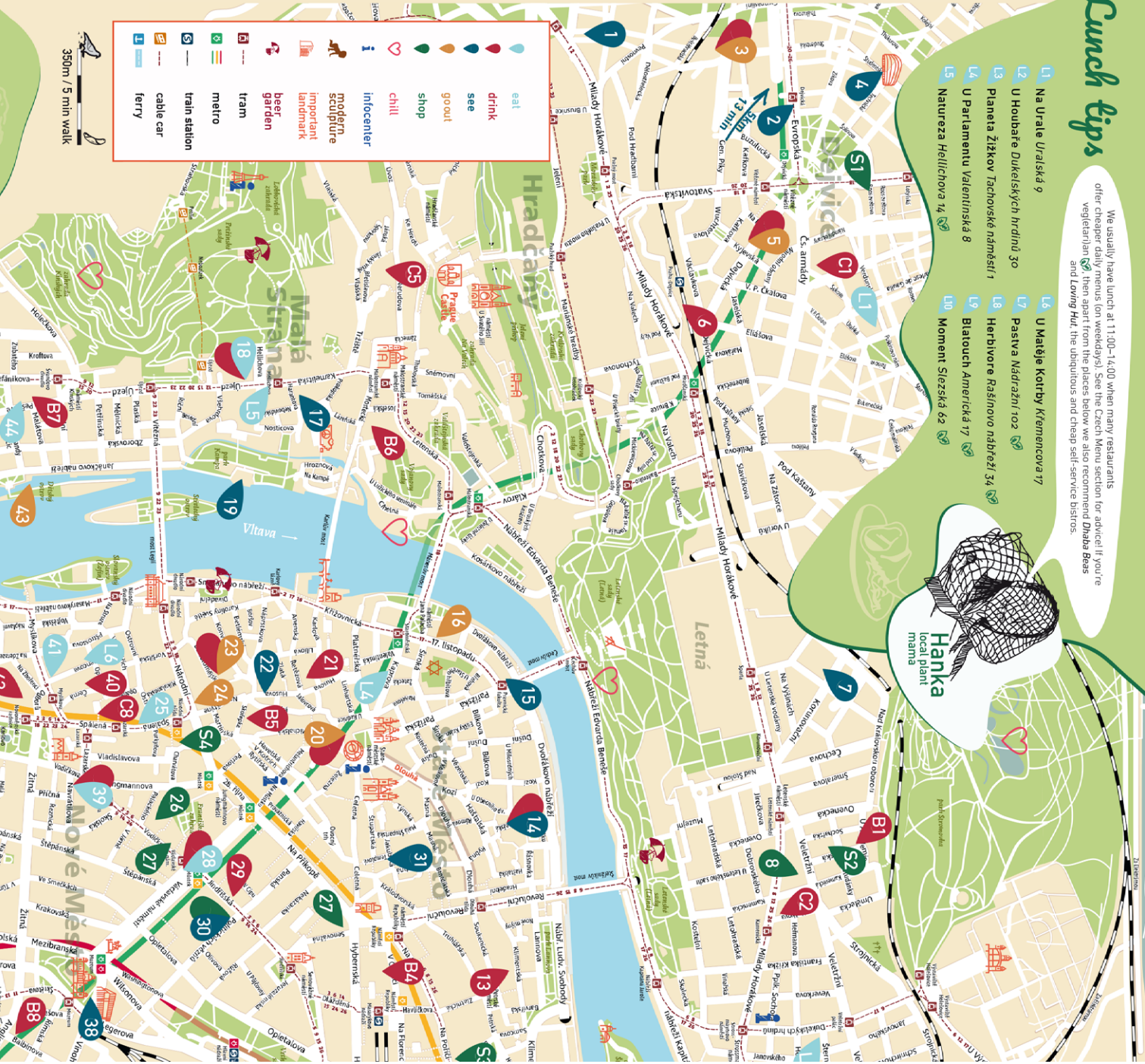
Hidden near the Bethlehem chapel, the **Jaroslav Fragner gallery** is named after the architect who reconstructed the church in the 20th century. Explore the history of architecture and see exhibitions of designers from Czechia and abroad. *Betlémské nám. 59*

23 EXPLORE FILMMAKING

In the small cinema **Ponrepo**, watch movies from Czech and foreign directors without being distracted by the sounds of crunching popcorn. Then have a drink in the artistic cafe downstairs. *Barbottinská 31*

24 ROCK IT

Hey, you rock souls and metalheads! **Vagon club** is big, narrow and long like a train wagon, with walls furnished with photos of music legends. You often see bands tributing U2, Nirvana, or Pink Floyd and after midnight you can headbang in the rock disco – with free entrance! *Národní 25*



what used to be a staugymnázium and then a department of cheap goods stands run by the Vietnamese community, turned into a gastro-cultural hub, the **Prague Market**. Here you'll also find a contemporary circus in Jakovs's and street art in **Trafic Gallery**. **Bubenské náměstí 13**

92/ ROCK IT
 Hey you rock souls and metalheads! **Vagon club** is big, narrow and long like a train wagon, with walls furnished with photos of music legends. You often see bands tributing U2, Nirvana, or Pink Floyd, and after midnight you can headbang in the rock disco – with free entrance! **Narodní 25**

www.use-it.travel



USE-IT is tourist info for young people: made by locals, no-nonsense, and up to date. Want to be the first to know about our new maps? Then like facebook.com/use-it.

Metro icon, tram icon, bus icon, ferry icon © Dopravní podnik hl. m. Prahy, a.s. Street & transport map of Prague CC BY-SA 4.0 Vladimír Mokry, Julie Křiváková.

Projekt je realizován s finanční podporou hlavního města Prahy

Publisher
 Jízdit z.s.
 Czechia
www.jizdit.cz
 © Jízdit z.s.

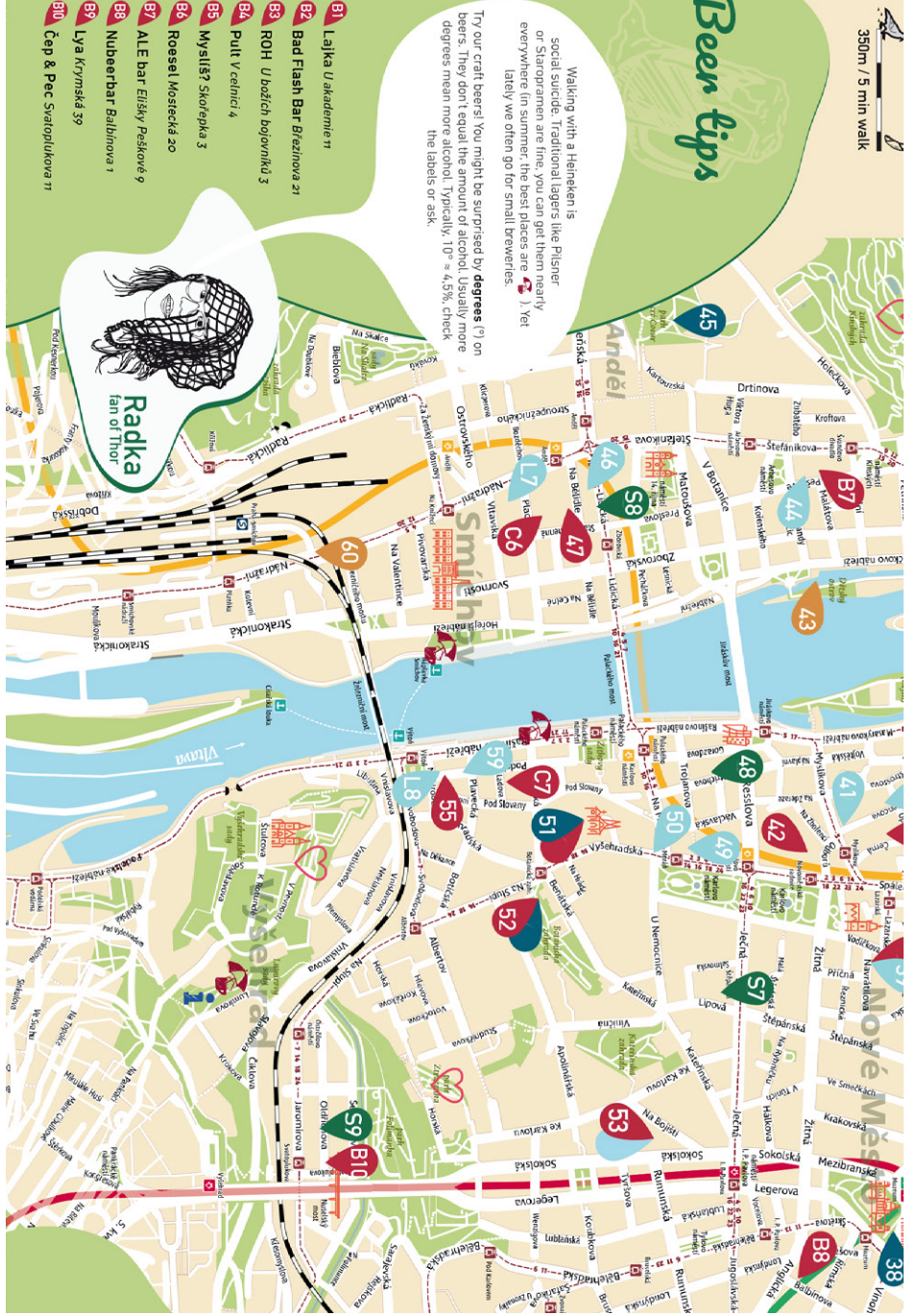


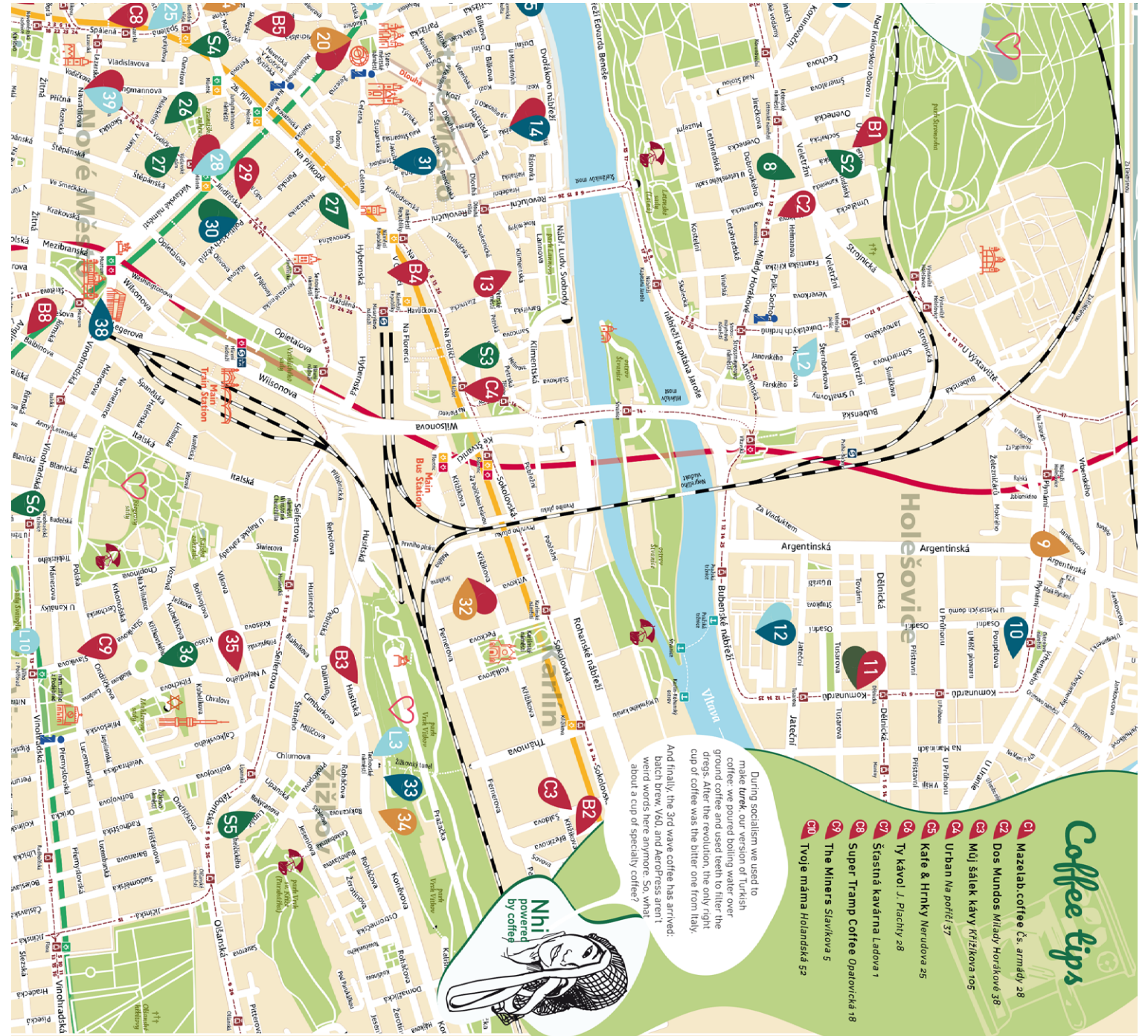
Beer tips

Walking with a Heineken is social suicide. Traditional lagers like Pilsner or Staropramen are fine, you can get them nearly everywhere (in summer, the best places are **47**). Yet lately we often go for small breweries.

Try our craft beers! You might be surprised by **degrees (°)** on beers. They don't equal the amount of alcohol. Typically, 10° = 4,5%, check the labels or ask.

- B1** Lajka U akademie 11
- B2** Bad Flash Bar Březinova 21
- B3** ROH U božích bojovníků 3
- B4** Pult v celnici 4
- B5** Myšlíř? Skotěpka 3
- B6** Roesel Mostecká 20
- B7** ALE bar Elišky Peškové 9
- B8** Nubearbar Balbínova 1
- B9** Lya Krymská 39
- B10** Čep & Pec Svatooplukova 11





Coffee tips

- 01 Mazelab coffee Čs. armády 28
- 02 Dos Mundos Wilady Horkové 38
- 03 Muž šálek kavy Křížkova 105
- 04 Urban Na poříčí 37
- 05 Kate & Hinky Nerudova 25
- 06 Ty Kavalí J. Plachty 28
- 07 Štátní kavárna Ladova 1
- 08 Super Tramp Coffee Opavická 18
- 09 The Miners Slavkova 5
- 10 Tvaja máma Holanská 52

During socialism we used to make *turk*, our version of Turkish coffee: we poured boiling water over ground coffee and used teeth to filter the droplets. After the revolution, the only thing left of the old coffee was the bitter one from Italy.



- 25 NIGHT CRAWLINGS
Partying all night? Need to put something other than alcohol in your body? **Fior Di Pizza** has arguably the best pizza in town, saving desperate souls after dark. Stand in line and ask the folks in front of you where they're hanging out next. *Destiny 34*
- 26 NO-NONSENSE CZECH SOUVENIRS
Instead of buying yet another magnet, go to **Bohema** to get original things related to the Czech history. How about a T-shirt with our beloved ex-president Václav Havel? Or a poster with the retro Škoda car? There are many great options in the shop. *Palackého 7*
- 27 PENCILS WITH A TRADITION
Koh-i-noor has been specializing in well-known Czech pencils and art supplies since 1848. If you are the artistic type and want to buy an unconventional souvenir, be sure to check out this shop! *Vašátkova 31 Na Příkopě 24*
- 28 SECRET BALCONY
Wenceslas Square feels crowded and weird when you're there, yet looks pretty from above. Enter the bookshop **Academia** (a good one!) and go upstairs to the cafe. Order at the bar and walk to the balcony. Sip your coffee while watching tourists crashing into each other down below. *Vačlavské nám. 34*
- 29 OLD ARCADE GAMES
The basement of the well-hidden **Joystick bar** is filled with arcades and gaming consoles, some of them from before you were born. Walk in and travel back in time. Oh, and watch out for the snakes in level 6. *Jindřišská 5*
- 30 NEO-RENAISSANCE POST
In our country, most postage are a source of complaints and jokes, but this **Main Post Office** stands out. It's beautiful, works nearly non-stop, and is English-friendly. In the corner, under the spiral stairs, find a window selling special Czech stamps. Send your love around Europe (stamp it) or the world (stamp ZI). *Jindřišská 14*
- 31 DRIED HUMAN HAND
The limb's been hanging in the **Church of Saint James the Greater** since 1400. It belongs to a thief who dared to steal from here. The legend says the statue of St. Mary grabbed his hand and held him until the guards came, who cut his hand off and put it on the wall. See it on the right after entering the church. *Mala Štupartská 6*
- 32 CULTURAL HOTSPOT
Former barracks turned into a large lively hip courtyard make up **Kasarna Karlin**. There's an open-air cinema, fireplace, an indoor cinema in a former pool, a winter ice skating rink, bars, a playground, and nice weird art. Perfect to chill out. *Pančička pluk 2*
- 33 (NOT SO) SCARY TUNNEL
The 303m long pedestrian **Zizkov tunnel** was built as a bomb shelter in 1955, storing provisions and reserving space for corpses. Now, it's well-illuminated and there are no dead bodies. More likely you'll meet a biker with a guitar, as the tunnel has great acoustics. *Zizkovsky tunnel*
- 34 TECHNO FEVER
The underworld of Prague? **Storm Club**. The legendary party hollow focuses on techno and drum'n'bass. It has one of the best sound systems in the city. Sweat is dripping from the ceiling in its inferno climate. *Technovské náměstí 5*
- 35 COCKTAIL NOVELS
Bukowski's. A cocktail bar. A dark one. Candles included. Devoted to Charles Bukowski, "a dirty old writer", in his own words. Sit down, order a Negroni and have nihilist thoughts. *Borjotova 86*
- 36 NOTEPADS WITH A SOUL
Old fabrics or vintage leathers can accommodate thoughts and drawings. The diary covers produced in **Škoba** are recycled and pretty. Their creative process is going on right in the shop. Maybe get your travel journal here? *Ševčíčkova 4*
- 37 SCI-FI BAR
Named after the dystopian novel Blade Runner **Electric Sheep** is all about science fiction, from cocktail names
- 38 JAZZ ON THE RIVER
In the afternoon, **Jazz Dock** is a free entry cafe with seasonal menus. In the evening, a lounge bar with soul, funk, and blues concerts. While listening to Grammy nominees or newborn Czech jazz stars, enjoy watching boats passing by on the river. *Janačkova nádv. 2*
- 39 HANDICAP IS NOT AN OBSTACLE
Cafe **Mezi řadky** employs people with mental disabilities. The staff is attentive, the lunch menu is cheap. The pastries are fresh (try the *Přesky koláč*), and the books are omnipresent - look, you are sitting on *Stevánkova 40*
- 40 VIEW WITH KANGAROOS
Enter the **Nový Smichov** mall and escape the consumerism via the pedestrian bridge on the 1st floor. You'll find yourself in a small **Sacred Courtyard**, offering a great city view from a different angle. There's also a nature science station nearby, with greenhouses and a few exotic animals (weekdays only). *Karlovská 10*
- 41 NON-STOP CZECH FOOD
In most Prague restaurants, the kitchen closes at 10pm so people are left with snacks, pizza, and kebabs. But the **Mariánka** eatery works 24/7, offering a big selection of Czech dishes for very affordable prices. Get your proper night lunch! *Na Babičce 38*
- 42 METAL PARADISE
Is your hair long enough? If so, **Hells Balls Rockin' Pub** welcomes you. Wear your black leather pants and sink into the atmosphere. 9 craft beers on tap will help with it! *Na Babičce 27*
- 43 VINYL HEAVEN
In **Rokomono**, it's a pleasure to lose track of time. So many records with both Czech and international music, but not only records! Turn right for music or left for books, comics, and CDs. The back room hides secondhand stuff. *Tržkova 9*
- 44 DESSERT WITH GRANNIES
Here, time stopped 30 years ago. In the middle of **Vačlavské passage**, you'll spot white tables where mostly women in their 70s enjoy their afternoon coffee and traditional Czech desserts. They have great taste, so observe and pick the same dessert. *Karlovo náměstí 6*
- 45 SPACE ICE CREAM
Go to **Lunar** for a *nanuk*, the ice cream on a wooden stick, popular in Czechia. The owners of the place, a sweet couple, claim their *nanuk* "look and taste like the Universe", hence the name of their shop. They have a dozen flavors, making it hard to decide...salty caramel is always a good option! *Vyšehradská 53*
- 46 SATAN CHURCH
At the end of WWII, Americans bombed Prague. Likely by accident - they thought it was Dresden. One bomb fell on the **Emanuel's Monastery**. The towers were then replaced by concrete spires which look demonic. Check out the city view in front of the church where in summer there's also a chill cafe! *Vyšehradská 49*
- 47 UNIVERSITY GARDENS
At the **Botanical Garden of the Faculty of Science**, you'll see, smell, and touch plants from all over the world. Only the entrance to the greenhouse (with tropical species) costs money. Also, slip into the hidden bar *Mrtvá tyža*. There, local students talk and drink, so join them! *Na Slupi 16*
- 48 ŠVEJK PUB
The most popular Czech book is *The Good Soldier Švejk* by Jaroslav Hašek. The humorous yet deep anti-war novel starts in the pub **U Kalicha** where the protagonist is seized by the secret service and ransomed into WW1. Prague pubs looked like that a century ago. *Na Bojišti 12*
- 49 RETRO EXPERIENCE
The cafe **Slávek** is in the style of the so-called First Republic (Czechoslovakia, 1918-38). The furniture and music will bring you back to the times when gentlemen wore suits and ladies wore long skirts. Go to the counter to look at all their delicious and great desserts. *Ramouzská 72*
- 50 WINE SELF-SERVICE



Secondhand tips

- 51 5. Avenue Jugoslávských partyzánů 6
- 52 Reformat U Sudanky 29
- 53 Restart Biskupská 1
- 54 Textile house Charvatova 1
- 55 Přestupní stanice Chelčického 17
- 56 Mini Stezská 15
- 57 Crashily Jecná 14
- 58 Vintage Room 31 Lidická 31
- 59 1981 Oldřichova 31
- 60 Sue Ryder Kodaněská 39

Lately our city has joined the circular economy trend. Secondhand and vintage shops pop up every month. A great opportunity to get something to remind you of Prague for a long time!



Eva
advocate
of bizarre

thoughts and drawings. The diary covers produced in **Škopa** are recycled and pretty. Their creative process is going on right in the shop. Maybe get your travel journal here? **Ševčíkova 4**

37 SCI-FI BAR

Named after the dystopian novel **Blade Runner**, **Electric Sheep** is all about science fiction, from cocktail garnes to books, decorations and regular thematic events. If the place isn't too busy, chat with the friendly bar owner Jane and her doggy Jackall. **Miraněská 7**

38 BETWEEN THE MUSEUMS

The highway crossing between the buildings of the **National Museum** was banned for pedestrians for 30 years. Since 2016, it's finally allowed, and we're so happy! The same year, the reconstructor of the old part of the museum invited us in to revisit the giant whale skeleton we loved as kids. **Vinohradská 3**

39 ULTIMATE NIGHT PUB

When everything seems closed, but you don't want to go home yet, go to **U Sudu**. It's huge and open non-stop, technically a winery, they also have special beers and proper food. Explore 2 bars downstairs! Folks battling football might need an extra player. **Vodčickova 10**

40 RAINBOW NEWS

Q Cafe is the LGBT+ heart of Prague. The bar person will update you on what's happening in Prague right now. The vibe is homely. People know each other, yet newcomers are welcomed. The cafe has 2 floors, and make sure to check out the basement with very special paintings. **Opavského 12**

41 VEGAN AND SOCIAL BISTRO

Czech and Eastern-European cuisines are far from vegan, but the bistro **Střecha** is changing that with meals like vegan schnitzels, goulash, or ribs. Try their fried cheese! On top of that, they employ people without a home or who have served a sentence, helping them deal with recovery. **Kramercova 7**

42 COFFEE IN AN 800 YEAR OLD CHURCH

Well-hidden near busy Charles Square, the cafe **Kaple** is based inside a centuries old chapel. Chill outside, or rest in the back room where you can feel the spirit of time. The cafe's owner is often present and he'll tell you stories of archeologists coming here to do their research. **Na Zbořelce 10**

The cafe **šňátr** is in the style of the so-called First Republic (Czechoslovakia, 1918-29). The furniture and music will bring you back to the times when gentlemen wore suits and ladies wore long skirts. Go to the counter to look at all their delicious and giant desserts. **Francouzská 72**

59 WINE SELF-SERVICE

In **Na brehu Rihny**, take an empty glass and choose a box with tapped wine. Each has a description and even a picture of the winemaker. Serve yourself and repeat. **Na Hrozdí 1 / Francouzská 84**

56 DRINK AND GAME

What about board games? You'll find dozens of them in **Bohemian Boards & Beers** where the staff will happily explain game rules and likely find you some company. They hold championships, game testing nights, and pub quizzes. Craft beers on tap. **Charvatova 18**

57 FUNCTIONALIST CHURCH

The extraordinary **St. Wenceslas Church** by Josef Gočár, finished in 1930, is modern and classic at the same time. Beautifully illuminated at night, its tower is supposed to be reminiscent of a lighthouse. However, to some people it looks like a giant, obscene finger gesture. **Mam. Svatopluka Čecha 3**

58 ART OF TEA

Find an oasis of peace and quiet, the tea house **Jedna baskaň**, take off your shoes, sit on the carpet, and choose from a wide tea selection (if in doubt, the friendly staff will help you). A great place to process your impressions about Prague. **Pod Zvonatkovou 14**

59 ART OF SOUP

Pivecká polévka prepares 4 kinds of soups and 2 main courses, including gluten-free and veggie options. Even a small portion of their soup is big. During lunch time, their three tables are often full, but it's worth the wait. **Pivecká 4**

60 OBSCURE MUSIC CONCERTS

If you're into things like post-rock, death metal, or hardcore punk, check out **Underdogs**. Deep in the basement, this is where the loudest gigs and the greatest moshtits happen. See the program at their website underdogsdogsgigs.org. **Madrázi 3**

USE-IT map is not commercial, nobody pays to be on the map. It's only young locals who make the selection.